

About the Brunswick Layover

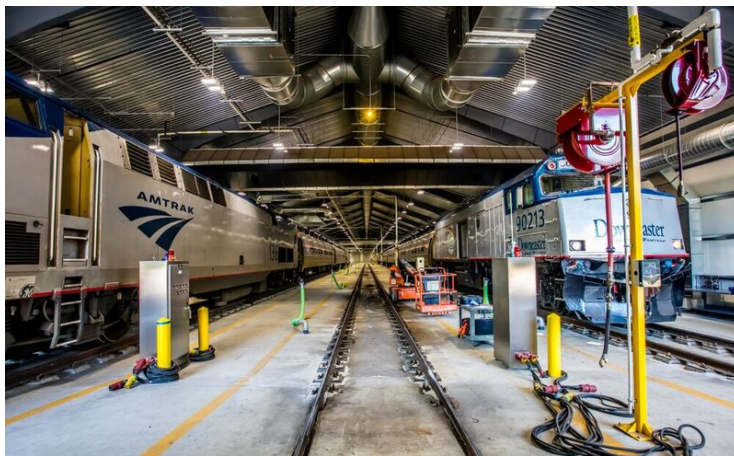
The Northern New England Passenger Rail Authority (NNEPRA) has constructed a train layover facility at the site of the Brunswick rail yard between Stanwood Street and Church Road in Brunswick to maximize the utility and efficiency of Downeaster service. Consigli Construction Company was the design/build contractor for the facility.

The facility, which was designed with significant input and participation from the public, includes a layover building to store and service Amtrak Downeaster passenger trains indoors. The 655-foot long layover building, which is 70 feet wide and about 37 feet high, will accommodate the overnight storage of up to three diesel locomotive-powered passenger train sets used for the Downeaster service. It is equipped with a ventilation system to handle locomotive exhaust and will be heated. Offices, locker rooms, wash rooms and storage facilities are located in an attachment on the north side of the building.



A series of three tracks connect the building to the railroad main line in a double-ended configuration to allow for trains to arrive or depart in either direction. The primary vehicular access to/from the facility is via Lombard Street.

Amtrak requires a facility to store, restock and perform daily inspections and routine servicing, such as cleaning and refueling of passenger rail equipment used for Amtrak Downeaster service.



Downeaster train sets power down inside the facility between revenue runs reducing fuel consumption, emissions, vibration and noise otherwise produced by idling trains. The enclosed facility provides a safer and more efficient environment for Amtrak and contractors to access and service train equipment and facilitates snow and ice melt off of equipment during the winter.